

Archangel IT's EA Management Solutions

EA Fast-Track Package

Finding answers to important questions:

What are the total costs of owning our IT systems?

Just how reliable and agile are they?

Are service expectations being met?

Why are multiple systems and processes needed to complete a single activity?

Are our IT investments and business objectives fully aligned?

What's are the potential benefits of migrating to solutions like SOA, Cloud Computing?

What are the optimal paths for consolidation and cost savings?



IN BUSINESS: TIME = MONEY

Technology is a major part of every business today, in fact it is no longer just tool for business, it is a business environment. But estimates are that 80% of IT budgets go into operations and maintenance leaving only 20% for innovation and transformation. Enterprise Architecture is a recognized best practice approach with tools and techniques which support strategic decisions that can reverse this paradigm. However many EA programs are either under-staffed or haven't developed the expertise or necessary modeling and advanced analytical capabilities, and for many small to mid-sized organizations this type of decision support is simply a 'wish-list' item.

The **EA Fast-Track Package** offered by Archangel IT is an affordable choice for rapidly understanding how well technology is performing, its costs and impact, so that organizations can begin seeing where they are and determine where they want to be. It also provides a foundation on which to build or improve internal EA practices to ensure ongoing success.

Our clients get access to an experienced team of enterprise architects without the large price tag. These practitioners quickly provide an unbiased assessment of the organization's technology situation such as how networks, technology, applications and data are supporting processes and strategy; understanding the corporate business model and desired levels of standardization and integration, and produce advanced performance and cost analyses such as TCO and ROI. Models and visual reports are provided to support the assessment and guide the development of a longer term strategic plan. Next step recommendations leave clients well positioned to improve and maintain their Enterprise Architecture programs.



The **EA Fast-Track Package** does not carry the burdensome weight of on-boarding contractors or hiring one of the large consulting firms. Your investment goes into your solution. It is quick, very reasonably priced, and only requires interview time and data collection support during the initial project phase, typically no more than 60 to 90 days. The AAIT team comes equipped with proven methods and a toolkit with cutting edge EA software tools featuring **ABACUS™**, a market leading product. We hire only experienced and well proven architects and guarantee results that provide immediate benefit. *Contact us today for a free initial consultation and price quote!*

WHAT DO YOU GET?

- Functional enterprise architecture models of your entire organization or selected business or solution segment.
- A solid understanding of your technical infrastructure and IT portfolio.
- Reports, analytics (i.e., ROI, TCO, Impact, Diff, etc.), simulations (i.e., Monte Carlo, Discrete Event, etc.) and recommendations for improvements, if any.
- A roadmap to help you cut costs and develop better IT capabilities.
- Full-time contractor support; access to expert EA community and an EA maintenance plan that includes periodic site visits for 1 year.

HOW CAN THIS HELP YOU?

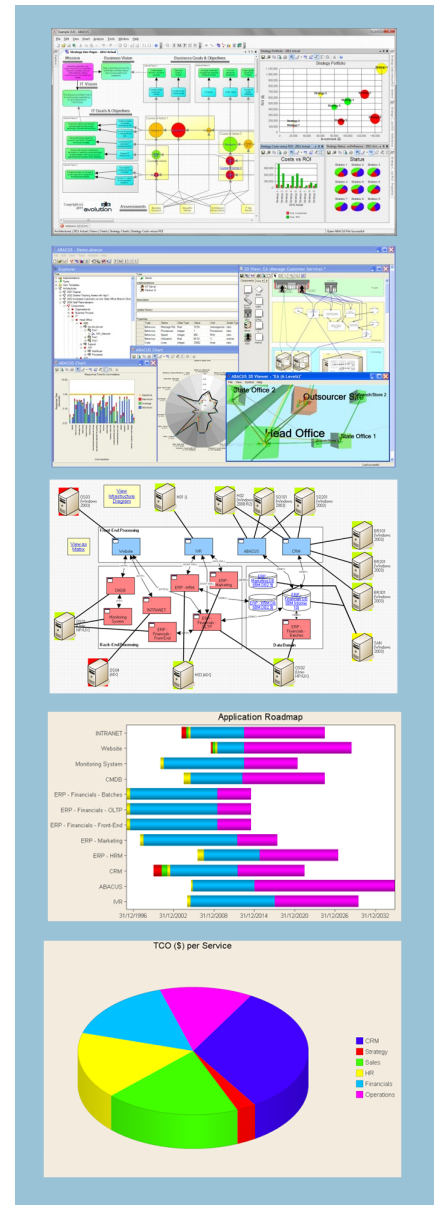
- Identification of potential for immediate IT cost savings and business performance improvements.
- Unbiased assessment provides assurance to shareholders, partners and auditors.
- Provides insights to better manage security and control risks.

WHY CHOOSE ARCHANGEL IT?

- Experienced professionals with the right toolkit, applying industry best practices and leading frameworks and methodologies.
- No on-boarding costs or complex agreements.
- Very affordable fixed price service.

WHO SHOULD BUY THE FAST-TRACK PACKAGE?

- Government agencies and corporations with or without formal EA programs and supporting software who'd like to benchmark or improve their EA performance, establish new capabilities, or develop a low cost, turn-key EA *Proof of Concept*.
- Organizations who've experienced years of organic IT growth, those undergoing major transformations (i.e., consolidations, M&A, new technology insertion, etc) or who want to focus on their business, and not IT.



Contact info:

Ph: 703-941-0001

info@archangelit.com

www.archangelit.com